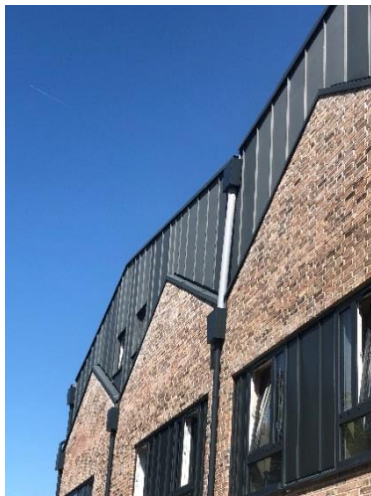
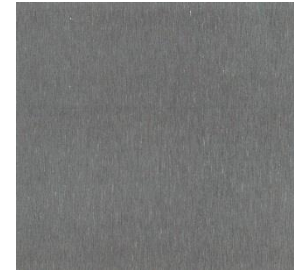


elZinc Oliva®



elZinc Oliva® enhances any building's appearance with unique and personalized aesthetics.



elZinc Oliva®

elZinc Oliva® is a dark grey pre-weathered zinc with subtle greenish and bluish hues. These contemporary tones guarantee a natural and balanced contrast with the surrounding environment.

elZinc Oliva® is manufactured according to the requirements established by EN1179, EN988 and ASTM B-69 standards. During the manufacturing process, small amounts of titanium and copper are alloyed to electrolytic zinc of greater than 99,995% purity to achieve outstanding material properties that exceed the requirements established by EN988.

Due to the nature of elZinc Oliva®, slight colour variations may occur between manufacturing batches, therefore we recommend using coils or sheets from the same batch for the same project.

Main applications

- Roofing and façade cladding
- Rainwater systems
- Interior decoration

Standard measurement

- Widths: 500 - 600 - 650 - 670 - 1000 mm

- Thicknesses: 0,65 - 0,7 - 0,8 - 1 mm

Other non-standard thicknesses are available upon request, from a minimum of 0,5mm to a maximum of 1,2mm.

Formats

- 1000 kg coils (internal diameter: 508mm)
- Fixed length 100 kg coils (pallets of 6 300 mm internal diameter coils)
- Sheets 2000x1000 mm in pallets of 1000 kg

Other dimensions are available upon request.

Specific working recommendations

- Correct behavior of the film on removal cannot be guaranteed beyond 8 months after dispatch from elZinc, plus an additional maximum of 2 months after installation. Adhesive residue can also remain on the surface of the zinc, which is difficult to remove.
- In order to correctly solder the material, the surface finish must be removed to reveal the shiny base metal below. To do this, elZinc recommends elZinc Flux for preweathered finishes, which has been specially developed for this purpose.
- Most folding and profiling operations can be executed once the material temperature has reached 7°C.
- Fold the material with an internal radius of 2x the thickness of the zinc.
- Having a pre-patinated finish, elZinc Oliva can show slight variations in shade.
- In locations with high salinity, we recommend the use of **elZinc Oliva Advance**.

For more information, contact us or visit our webpage: www.elzinc.es

This document only describes the characteristics of elZinc Oliva, and it is the responsibility of construction professionals to check that other materials and techniques used on the project are compatible with this material.